

# *Transfer Pioneer* **HOUSING SELECTION**

**2026-2027**



Office of Student Living

# Contents

This document includes everything you need to know about choosing your housing assignment for the 2026-2027 academic year.

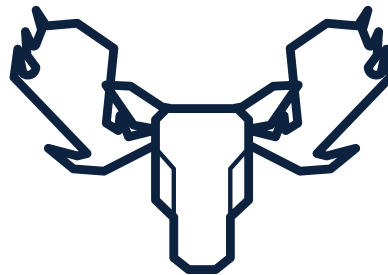
Flip through the pages to find the following information:

STEP BY STEP  
INSTRUCTIONS

HOUSING SELECTION  
TIMELINE

HOUSING OPTIONS AND  
ELIGIBILITY

PROJECTED  
ROOM & BOARD RATES



FREQUENTLY ASKED  
QUESTIONS

# Housing Options

## & ELIGIBILITY

# HOUSING OPTIONS

Incoming Transfer students may be assigned to any of our residence halls. Our most common housing assignments for Transfer students are within one of two transfer communities in Bell Hall, Tower Hall, or Pioneer Village.

Incoming Graduate Students may be placed into any of our residence halls but are most often placed into Alumni Hall or Pioneer Village.

**Please note:** Housing waivers, stipends, and grants cannot be applied to Pioneer Village housing charges. This includes but is not limited to international student housing waivers and EMT housing waivers.

## TRANSFER STUDENTS

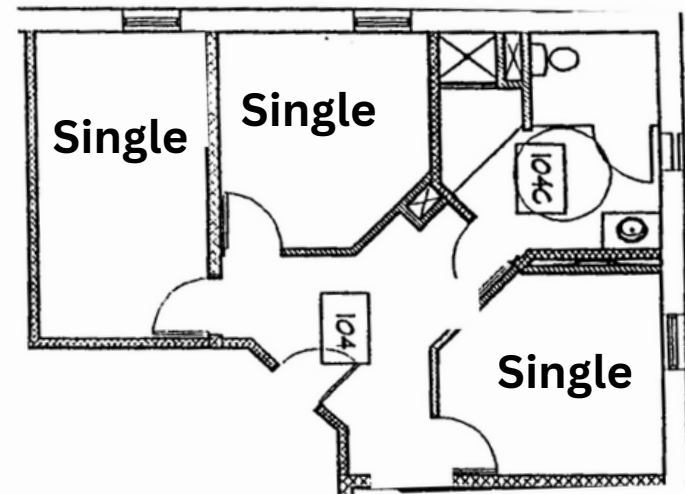
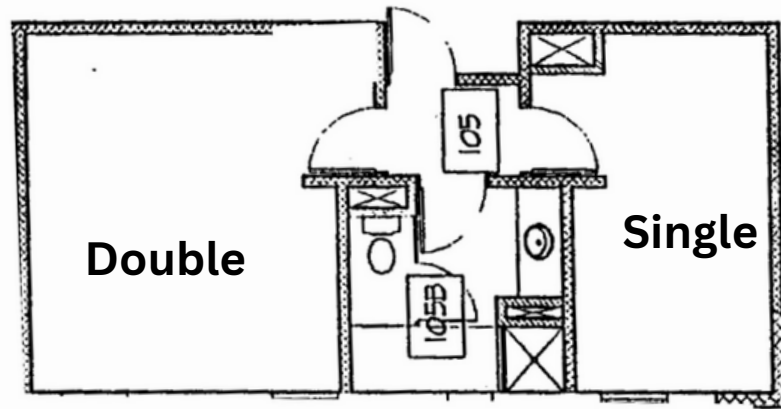
# THREE-PERSON ROOMS

Three-person rooms are called "suites" or "clusters" here at Utica University and are available in Bell Hall and Tower Hall. There are both **3 singles** and **1 single/1 double room** options with a shared bathroom.

**Please note:** Bell and Tower Halls both come equipped with: Communal Kitchen Facilities, Lounges, Recreation Areas, Vending, Study Room(s), In-Suite Restrooms, Communal Laundry

## BELL AND TOWER HALLS

# THREE-PERSON ROOMS



## EXAMPLE FLOOR PLANS

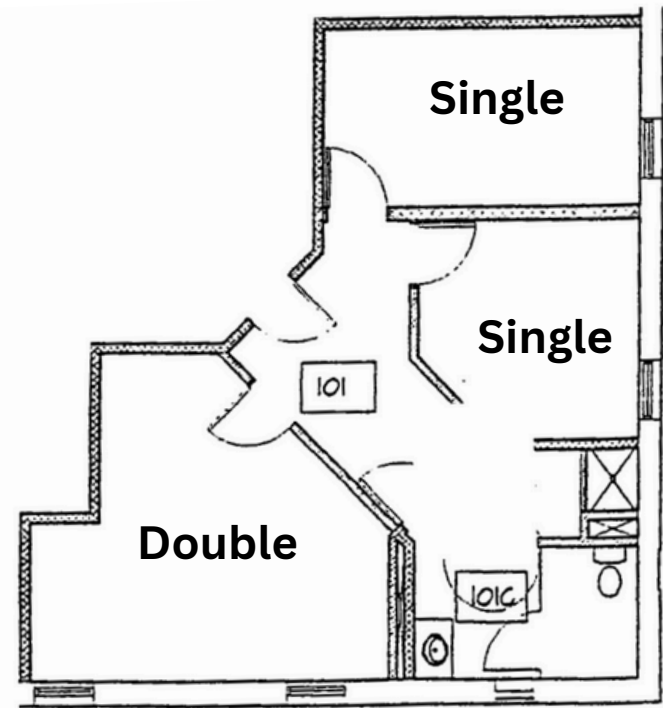
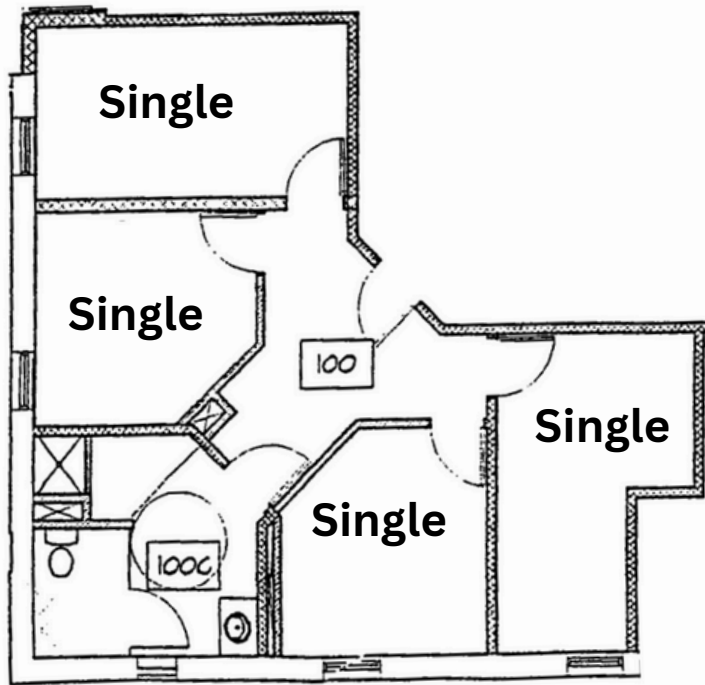
# FOUR-PERSON ROOMS

There are four-person clusters, suites, and apartments available at Utica University. Clusters have a shared bathroom, suites have a shared bathroom and living area, and apartments have two shared bathrooms, a living room, and a kitchen.

**Please note:** Pioneer Village apartments are exclusive to junior, senior, and graduate students.

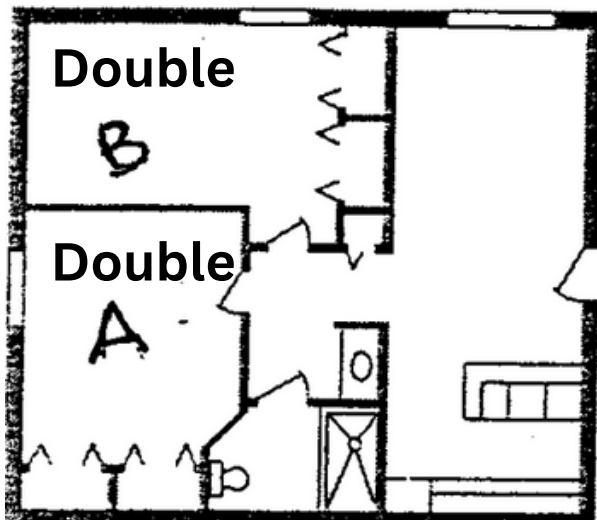
ALUMNI, BELL HALL, TOWER HALL  
PIONEER VILLAGE

# FOUR-PERSON ROOMS



**BELL & TOWER EXAMPLE FLOOR PLANS**

# FOUR-PERSON ROOMS



**ALUMNI EXAMPLE**



**PIONEER VILLAGE EXAMPLE**

# SIX-PERSON ROOMS

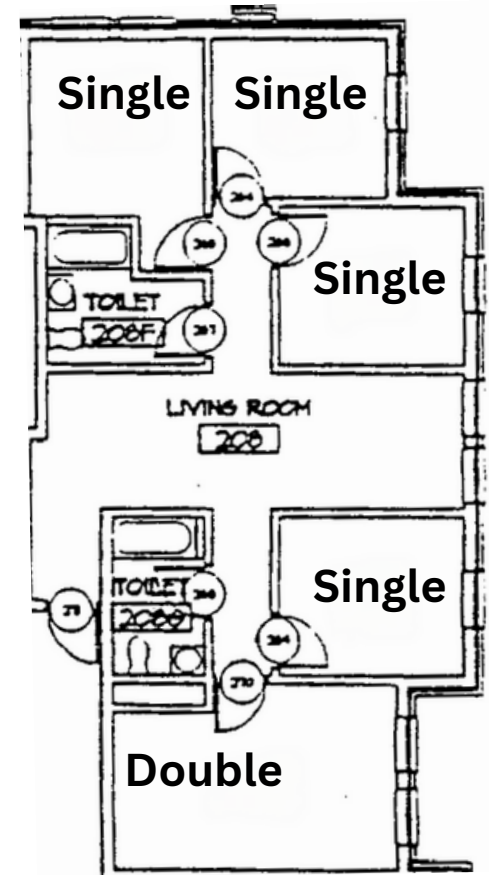
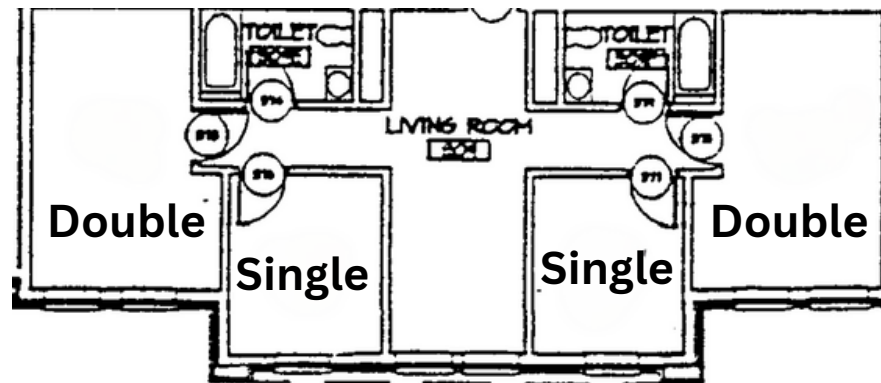
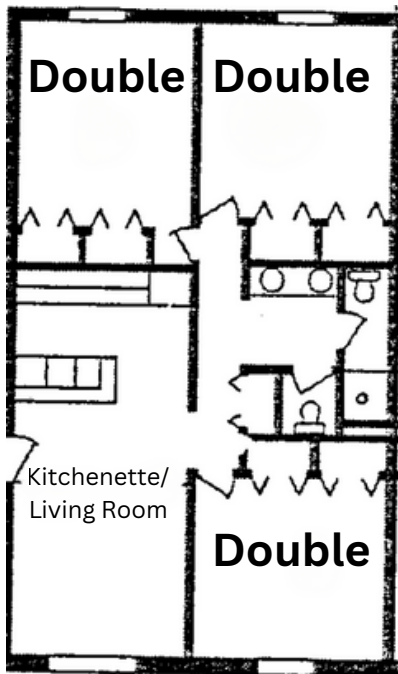
Six-person rooms are called "suites" here at Utica University and are available in Alumni Hall and Boehlert Hall.

There are three types of six-person suites: 3 double rooms; 2 double rooms and 2 single rooms; 1 double room and 4 single rooms.

**Please note:** Alumni Hall suites have a kitchenette where countertop appliances are permitted. Boehlert Hall has communal lounges and study areas within the building. Both have 2 bathrooms per suite.

## ALUMNI AND BOEHLERT HALLS

# SIX-PERSON ROOMS



## EXAMPLE FLOOR PLANS

# SEVEN-PERSON ROOMS

Seven-person rooms are called "suites" here at Utica University and are available in Boehlert Hall.

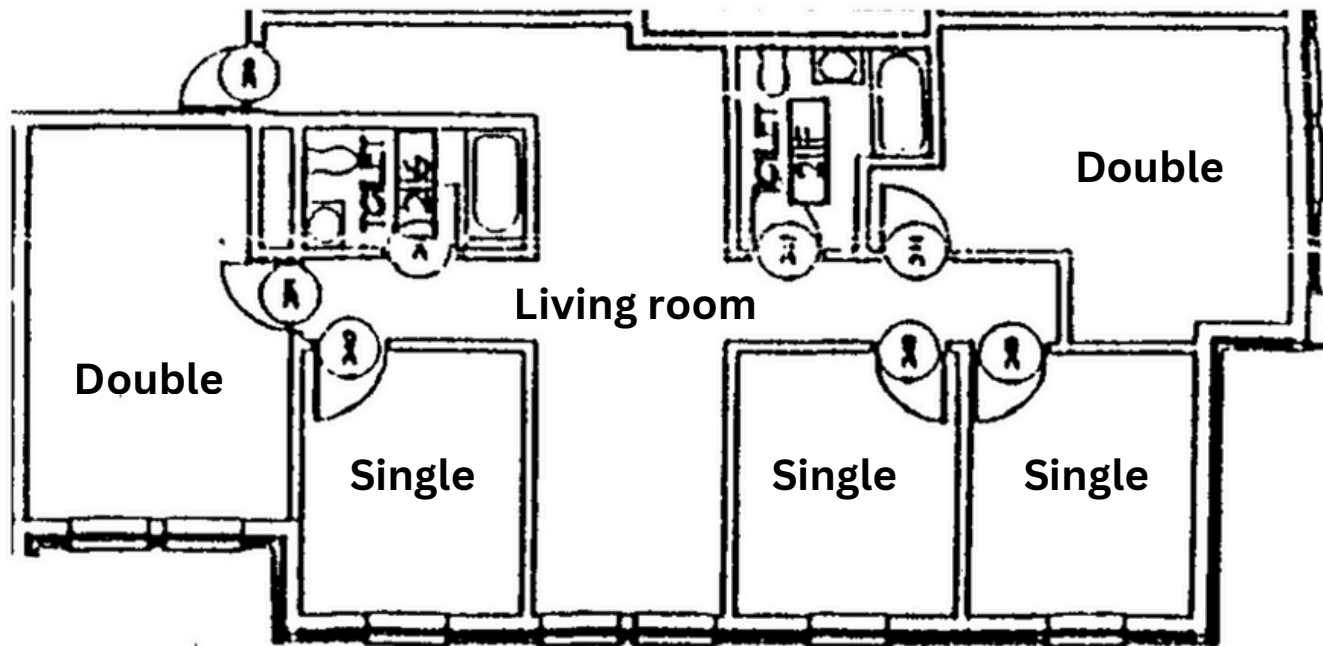
There is only one type of seven-person suite comprised of:  
2 double rooms and 3 single rooms. 



**Please note:** There are only **four (4)** of these suites available, so they are **very** limited, often being filled by returning students.

## BOEHLERT HALL

# SEVEN-PERSON ROOMS



## EXAMPLE FLOOR PLAN

*Projected*  
**ROOM & BOARD RATES**

---

# ROOM RATES

The rates provided are based on a per-student, per-semester basis for the 2026–2027 academic year. Tentative and subject to change.

Single Rooms		Double Rooms	
Bell/Tower/Boehlert Single	\$4,564	Bell/Tower/Boehlert Double	\$4,146
Pioneer Village Single	\$7,004	Alumni Double	\$3,955
North/South Hall Single	\$4,232	North/South Hall Double	\$3,769

Please note: Utica University grants and/or EMT Waivers are not valid for Pioneer Village.  
Please consider this when selecting your preferred housing location.

# BOARD (MEAL PLAN) RATES

The rates provided are based on a per-student, per-semester basis for the 2026-2027 academic year. Tentative and subject to change.

<b>Platinum Plan</b>	Unlimited meals in the Dining Commons, \$250 in Declining Balance + 5 guest meal passes per semester. All Residential Students are eligible to purchase this plan.	\$4,675
<b>Gold Plan</b>	Unlimited meals in the Dining Commons, plus \$150 in Declining Balance + 5 guest meal passes per semester. All Residential Students are eligible to purchase this plan.	\$4,575

# BOARD (MEAL PLAN) RATES

## (PIONEER VILLAGE ONLY)

The rates provided are based on a per-student, per-semester basis for the 2026–2027 academic year. Tentative and subject to change.

<b>Orange Plan</b>	185 meals per semester, plus 5 guest passes. Approximately two meals per day, including Red Chef to-go meals. Only Pioneer Village residents may purchase this plan.	<b>\$2,145</b>
<b>Blue Plan</b>	120 meals per semester, plus 5 guest passes. Approximately one meal per day, including Red Chef to-go meals. Only Pioneer Village residents may purchase this plan.	<b>\$1,425</b>

Orange and Blue Meal plans have optional add-ons for declining dollars to be charged directly to your account. You may add \$100 or \$200 at the time of your selection.

**THE 2026 - 2027 HOUSING  
CONTRACT WILL OPEN ON  
FEBRUARY 1, 2026**

Step by Step

# INSTRUCTIONS

---

# STEP 1

## **Complete the On-Campus Housing Contract and Compatibility/Pref Form**

- Housing contract will open February 1
- All new students applying for on-campus housing must complete the On-Campus Housing Contract by June 1, 2026 at 12:01 AM.
- This contract can be found online [here](#).
- The Compatibility/Preferences Form will become available after you complete the On-Campus Housing Contract but can be found [here](#) as well. This form assists our office in coordinating match-ups with roommates, completing suites, or in case of mid-year vacancies.

# STEP 2

## **Apply for Medical Accommodations**

- Any student who believes they need a housing accommodation due to significant, documented medical disability, including short-term injuries, should contact the Office of Learning Services no later than June 1, 2026 at 5 PM with their request.
- All requests will require documentation from a physician or other medical provider and will be reviewed by the Housing Accommodations Committee.
- Email Judy Borner <jcborner@utica.edu> to start this process.

# STEP 3

## Communicate with Student Living

- Transfer, graduate, and international students may receive further questions or be provided names of other students needing roommates. Please keep an eye on your email for the best possible match.
- **Please note:** these requests cannot be guaranteed depending on space availability but the Assistant Director of Housing Operations will work to try and accommodate as many new transfer roommate requests as possible.

# STEP 4

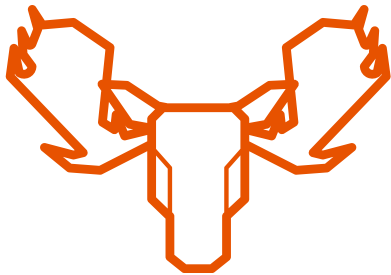
## Complete the Roommate Match

- Transfer, graduate, and international students may email [studentliving@utica.edu](mailto:studentliving@utica.edu) with specific roommate group requests.
- Please note: Athletes are not guaranteed housing with a teammate. Coaches often suggest teammates live together, but students must formally request each other via email.

# STEP 5

## Receive Your Housing Information

- The Office of Student Living and Campus Engagement will begin distributing room assignments on July 6, 2026.
- Contracts received late will be processed on a rolling basis based on availability.



# Housing Selection TIMELINE

1	Complete On-Campus Housing Contract	February 1 through June 1*
2	Complete Roommate Compatibility & Preferences Form	February 1 through June 1
3	Submit Roommate Match (if desired) Via Email	May 1 - June 1
4	Receive Housing Information	July 6

*\*While contracts can be submitted after June 1, this will limit roommate options.  
Late contracts may also result in housing assignment information being delayed.*

# Frequently Asked

## QUESTIONS

---

## WHAT IS THE ON-CAMPUS HOUSING CONTRACT?

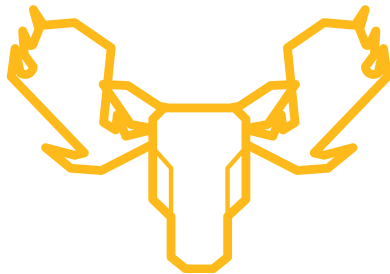
- The On-Campus Housing Contract is a binding year-long contract between the student and the University.
- The agreement outlines your rights and responsibilities as a residential student as well as several procedures expected of you by the Office of Student Living & Campus Engagement.
- When you sign the Housing Contract before selection day, you are committed to living in the residence halls until the end of the academic year that you are signing the agreement.
- In the case of unusual or extenuating medical or financial circumstances, requests for early termination of the housing agreement can be submitted through the proper forms on our website.

## DOES UTICA HAVE A HOUSING REQUIREMENT?

- All students are required to live in a Utica University residence hall for the first two years of attending Utica University.
- At the discretion of the University, certain situations (as outlined on the next page), may result in a student being granted an exemption from the two-year residency requirement or release from their current, active On-Campus Housing Contract.
- Students who choose not to participate in Housing Selection, but fall under the requirement, will be placed in campus housing where space is available.
  - These assignments will be made after the traditional selection process and students will be responsible for the room and board charges associated with this assignment.

# ARE THERE EXCEPTIONS TO THE RESIDENCY REQUIREMENT?

- In certain circumstances, students may be eligible for an exemption from the two-year residence requirement. The granting of such exemptions is subject to review and approval by the University. The process for seeking an exemption can be found on the Utica University Student Living website. Residency Exemptions may be submitted up until the start of the academic semester.
- The Residency Exemption Application is available [here](#).

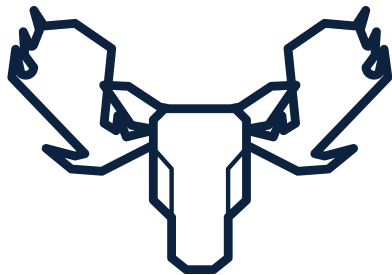


Potential rationales for approved Residency Exemptions include:

- The Student's intended house is within a 30-mile driving distance of campus AND
  - The Student is residing with their parents/legal guardians, AND/OR spouse documented by marriage AND/OR domestic partnership, AND/OR a declared dependent, AND/OR an approved relative who will act as the designated guardian during their attendance at the University.
- The Student is a transfer student who has completed two or more years as a full-time, matriculated student at another institution or in conjunction with their time at Utica University and another institution.
- The Student will be 21 years of age by August 1 (applicable during the summer prior to the first day of classes for the fall term for incoming first-year or transfer students only)
- The Student is an active or military veteran
- The Student has acquired significant life experiences that align with the unique experiences of the aforementioned exemptions. This may include individuals who have participated in long-term community service programs (e.g. Peace Corps, AmeriCorps), traveled extensively with organized groups or teams, or engaged in similar life-enriching experiences.

## WHAT DO I DO IF I KNOW WHO I WANT TO LIVE WITH?

- For Transfer, international, and graduate students: If you have a friend, current student, or another new student you wish to live with, send an email request to [studentliving@utica.edu](mailto:studentliving@utica.edu) to initiate the process.
- Remember, it's essential for all parties involved to agree to the living arrangement.

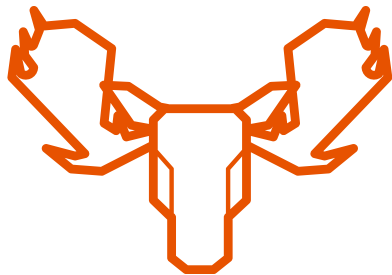


## WHAT IF I DO NOT REQUEST A ROOMMATE?

- Our office will do our best to match new students up based on the responses they provide on the Compatibility/Preferences Form.
- The Assistant Director of Housing Operations works hard to find suitable roommate(s) based on the information provided, but students are encouraged to be very honest in their Compatibility/Preferences form to assist this process.
- Our goal is to create a living environment where each student feels comfortable and supported. By being open and honest in your responses on the Compatibility/Preferences Form, you are helping us ensure that we can pair you with roommate(s) who share similar lifestyles and preferences.
- Your input is valuable in making your living experience as enjoyable as possible.

## WHAT IF I MISS THE DEADLINE?

- It's important to note that even if you miss the deadline to submit your On-Campus Housing Contract, you can still fill out the form and be assigned housing.
- While we may not be able to fulfill late roommate requests, our team will do their best to pair you with a roommate who shares similar interests and habits to ensure a positive living experience for both of you.
- Your comfort and well-being are our priorities, and we are here to support you every step of the way.



## WHAT IF WE WANT TO START THINKING ABOUT WHAT TO PACK FOR COLLEGE?

- When preparing for your move, it's essential to have a well-thought-out packing plan. By visiting our [Move In and Important Dates page](#), you will find a comprehensive packing guide to assist you every step of the way.
- Furthermore, as you plan for the upcoming semester take a look at the academic year's breaks. Using this page as a resource is a great idea to take a closer look at the schedule. This proactive approach will help you stay organized and prepared for any upcoming transitions or travel plans.

## WHAT DO I DO IF I BELIEVE I NEED A HOUSING ACCOMMODATION?

- Any student who believes they need a housing accommodation due to significant, documented medical disability, including short-term injuries, should contact the Office of Learning Services no later than June 1, 2026 at 5 PM with their request.
- All requests will require documentation from a physician or other medical provider and will be reviewed by the Housing Accommodations Committee.
  - Email Judy Borner <jcborner@utica.edu> to start this process.

## WHAT IF I HAVE A QUESTION THIS DOCUMENT DIDN'T ANSWER?

- Our staff are happy to help answer questions about housing selection, move in, and living on campus. You may email the office at <studentliving@utica.edu>
- Throughout the summer you will also be invited to SupportingU virtual Q&A sessions where staff will cover various topics including but not limited to move-in, financial aid, on-campus employment, orientation, etc.
- Additionally, if you feel like you do better in a conversation, or if a parent/guardian wants to chat, you can call our office at 315-792-3298.
- Your comfort and understanding are our top priorities, and we want to ensure that your transition to campus life is as smooth and stress-free as possible. Feel free to reach out at any time; we're here to support you every step of the way.

# Key Links

[PACKING GUIDE &  
MOVE-IN  
INFORMATION](#)

[RESIDENCE HALL  
\(BUILDING\)  
INFORMATION](#)

[EMAIL STUDENT LIVING  
FOR ASSISTANCE](#)

Where Will



Call Home?